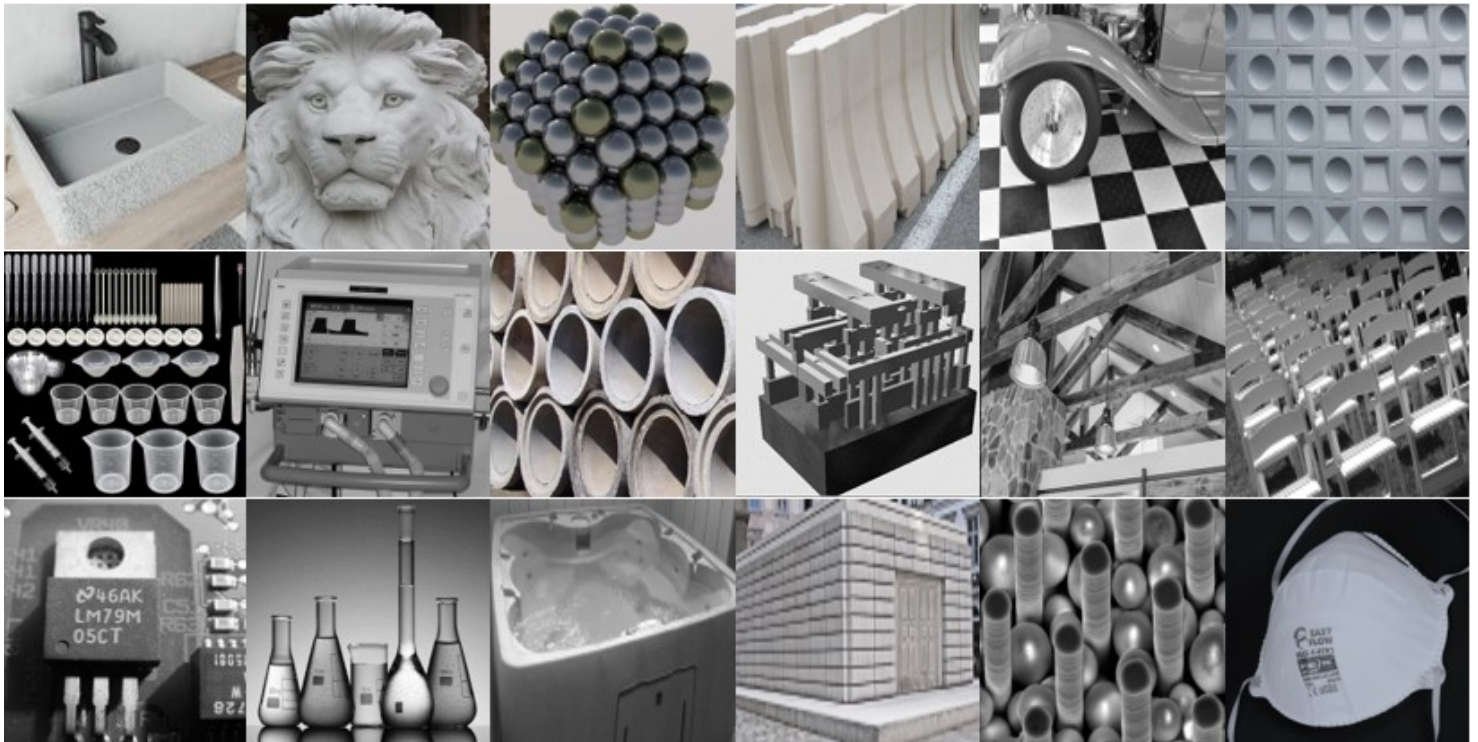


Name:

Date:

Class:

Design Engineering Student Worksheet **Answers**



<p>Sink –rectangle; waterproofed cement; circular metal drain; mold had inset or walled mold to prevent filling</p>	<p>Lion head – part of 3D architecture; cement; one-pieced mold with varied shapes and depths</p>	<p>Nanotechnology beads -spheres 3D; metal; hollow and solid spheres possible</p>	<p>Road barriers – cement; mold</p>	<p>Car – varied shapes and materials for parts put together in a high-fidelity prototype on top of squared flooring</p>	<p>Wall – cement; different shapes from different mold and placed together; no materials in center due to mold</p>
<p>Scientific and Biomedical containers for delivering liquids – plastic molds; precision of molds important</p>	<p>Respiratory Ventilation Process – numerous parts on exterior and interior of varied shapes and materials; high-fidelity prototype</p>	<p>Drain pipe – cement; open cylinders; varied diameters/thickness and ends</p>	<p>Nanotechnology – computer part; varied materials made from separate molds and assembled into prototype</p>	<p>Ceiling trussle – architectural wood with metal corners in triangle; supports weight of ceiling distributed and also decorative</p>	<p>Chair – resin/plastic; different parts assembled together</p>
<p>Nanotechnology – microchip; varied conductive and non-conductive materials assembled together</p>	<p>Scientific glassware – precision mold; varied sizes relate to volume capacities</p>	<p>Hot tub – large plastic mold with cut-ins; final prototype contains numerous plastic parts assembled together on exterior</p>	<p>Mausoleum – constructed of cement rectangles from molds assembled together; interior hollow</p>	<p>Nanotechnology – spheres and discs from different molds attached together; silicon</p>	<p>Face mask – consistency in template and material pores important</p>