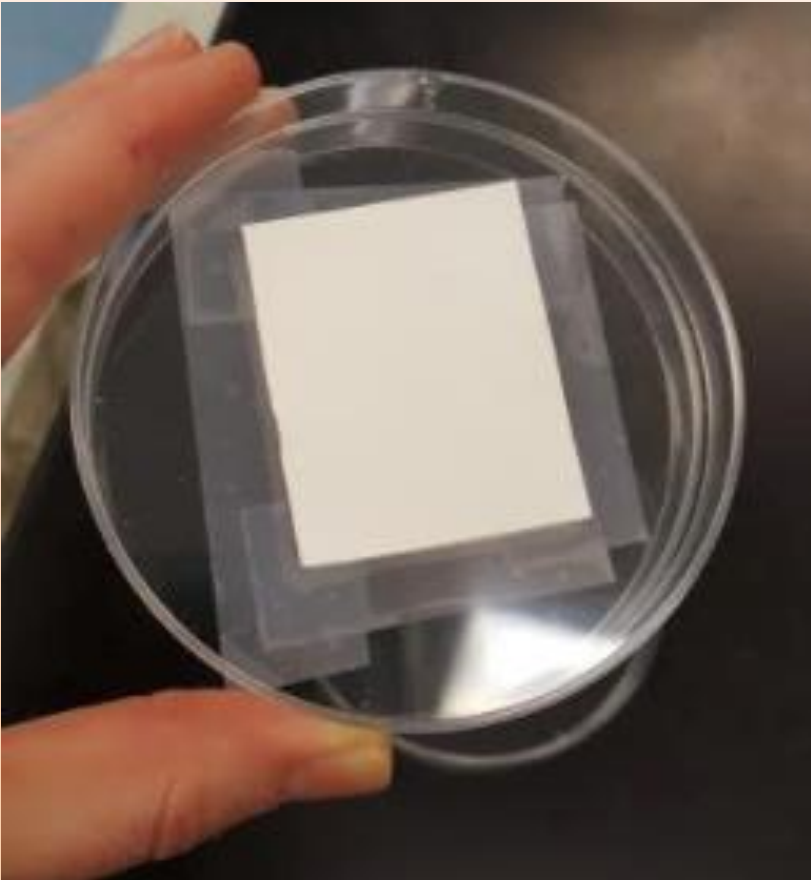


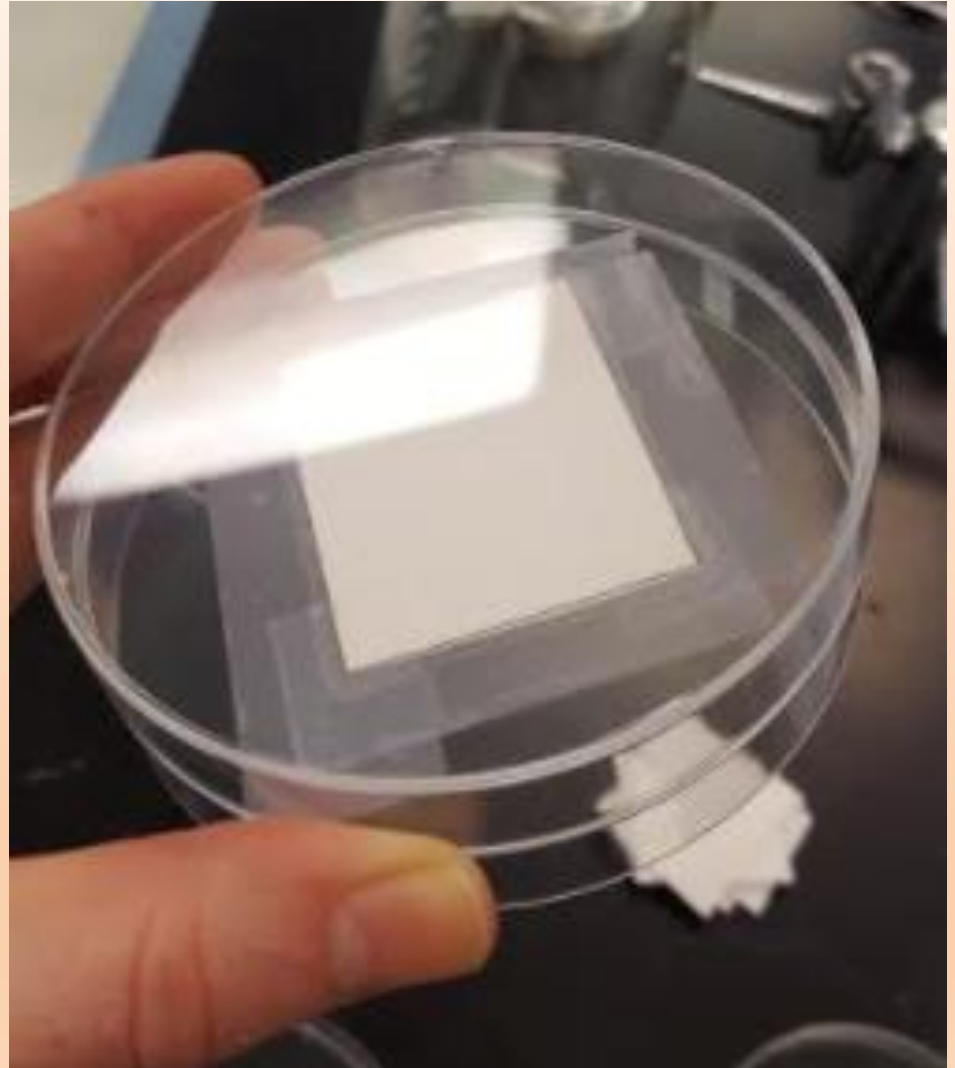
# Sample Preparation

Tape a sample paper template on the outside bottom of a petri dish

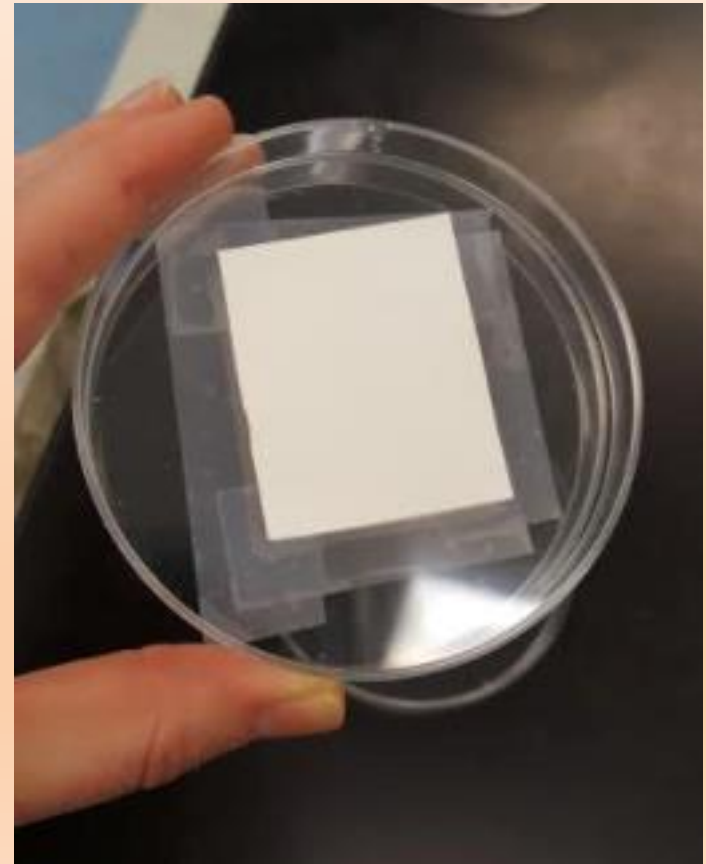
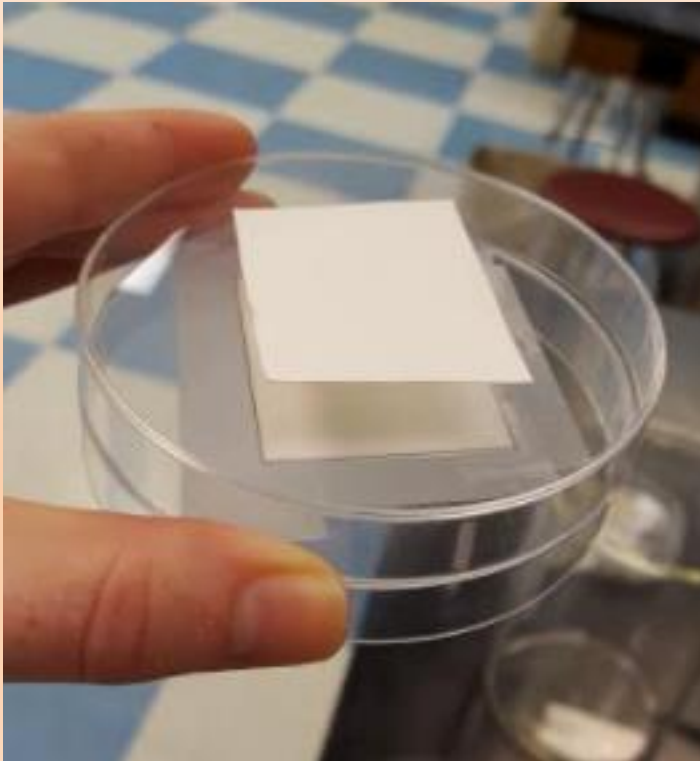
Use this as one of your petri dishes AND as a template to prepare all the rest of your petri dishes to receive bioplastic samples



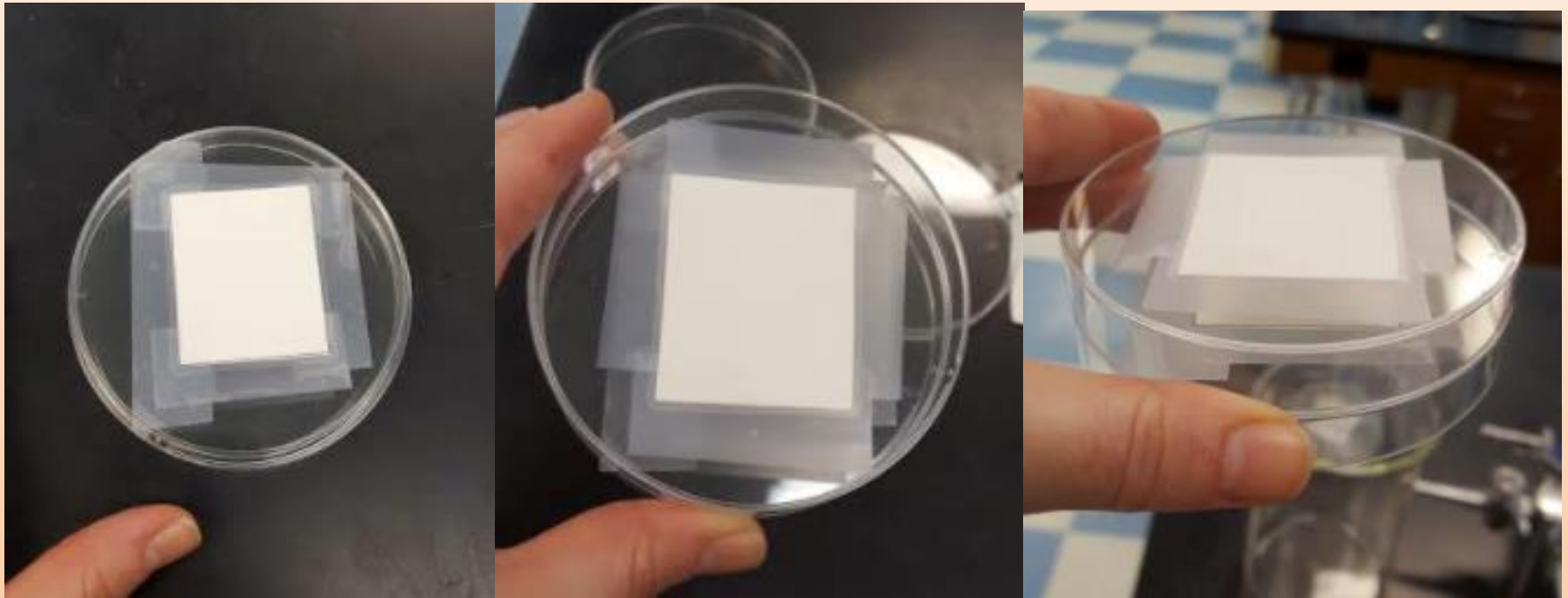
Place a blank  
petri dish on  
top of the petri  
dish template



Place the sample paper template on top of the blank petri dish using your first petri dish as a guide



Tape down the sample paper template on the blank petri dish



Label the lid and bottom  
of the petri dish template



Sample may crack as it cures



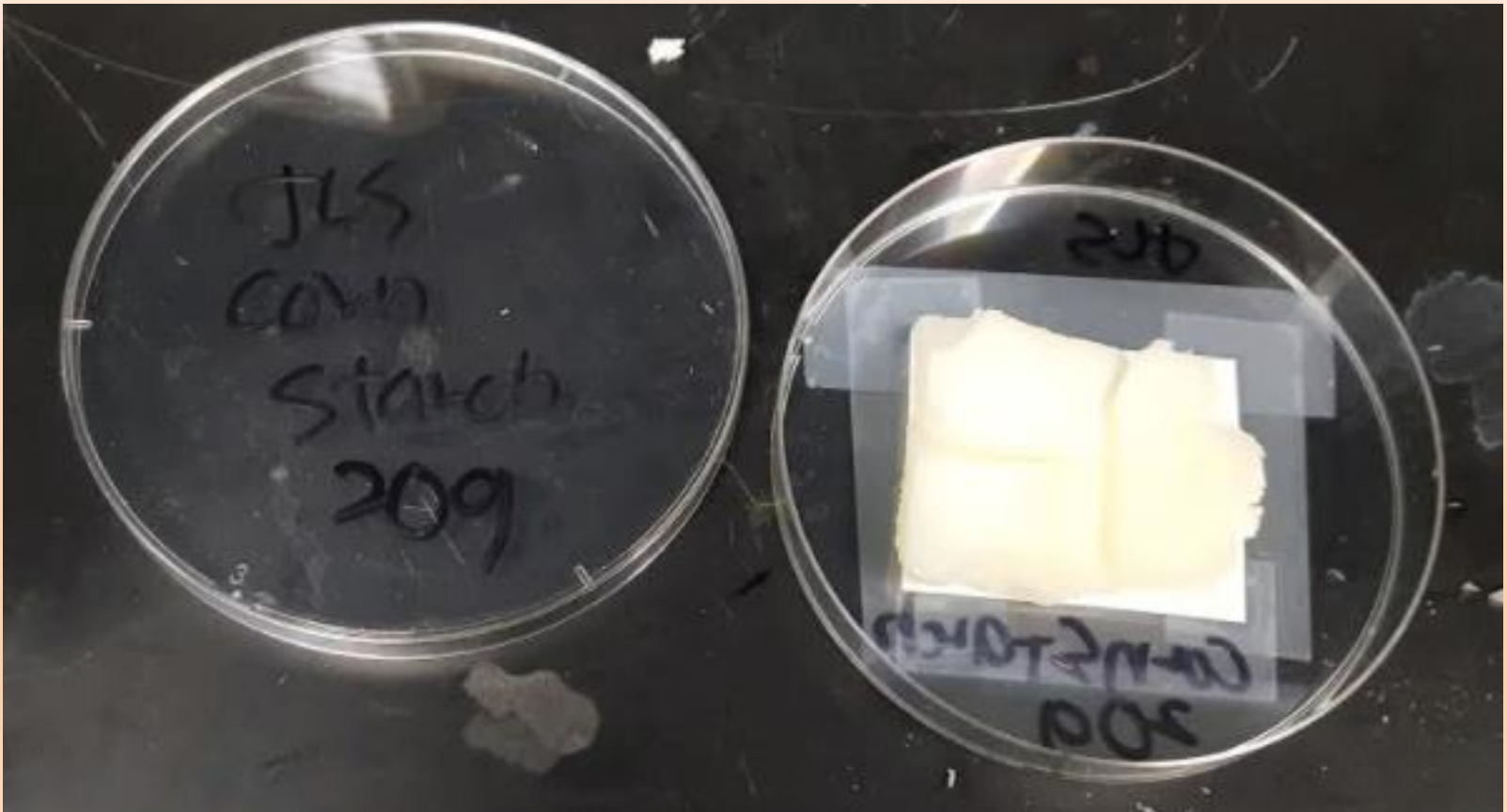
Place paper template  
over the most intact  
portion of the  
bioplastic

Use a box cutter to  
cut around paper  
template





Place cut sample over the paper portion of the petri dish template



Keep the extra pieces for  
qualitative analysis

